

DF-DT

Protect your generator with the compact and all-round DF-DT cubicle by SGC

Safety, conviviality, environmental concerns and sizes are influencing the markets and have become decisionmaking arguments.

SGC nv SwitchGear Company's DF-DT was specifically designed to provide a solution for a wide range of needs in the field of generator applications, with compact dimensions in mind.

WITH UNIQUE SAFETY FEATURES FOR THE OPERATOR!



SGC

SwitchGear Company

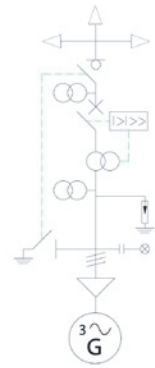
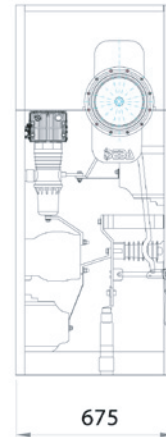
THE SPECIALIST IN MEDIUM VOLTAGE SWITCHGEAR

www.switchgearcompany.eu - info@switchgearcompany.eu

DF-DT

A compact and all-round cubicle to protect your generator

User-friendliness, safety and care for the environment are the main drive for developing SGC's switchgear. Over time SGC nv SwitchGear Company has developed the "DF-2", a modular concept which combines all medium voltage functions. DF-DT is a product variant based on this DF-2 range.



THE CONCEPT

- Up to 12 kV insulation voltage level - 630 A
- Triple-phase load break switch RV 44 - class E3
- Vacuum circuit breaker with magnetic drive (mechanical endurance C-0: 50000)
- Interlocked earthing switch with a rated making capacity up to 63 kA downstream of the circuit breaker
- Cable support structure
- Door interlock
- LV compartment
- Air insulated cable and bus bar compartment
- PI/LSC2A/IAC AFL 16 KA (AFLR-Optional)/E3/M1 according to IEC 62271 - (100/102/103/105/200)
- Integrated voltage presence indicators with phase comparison possibility (IEC 61243-5)
- Clear and visible single line diagram with functional integrated interlocking

THE ADVANTAGES

- Reasonably priced and compact product
- **Easy MV-configuration** (small dimensions & modular type)
- **Easy to install near or next to your generator and operating panel** (IAC 16kA/1s - AFLR & no lengths of MV- and LV- cables)
- **Protection of the generator with overvoltage surge suppressors**
- **Easy to operate** (no complex synoptic)
- Extra advantages compared to competitors: **excellent safety for the operator** through:
 - **Internal Arc-proof cubicle** IAC AFL 16kA/1s
 - **Interlocked visible earthing switch** (no use of unreliable door-contacts needed in case of unintentional opening of the panel and no use of earth terminals needed inside the cubicle to create visible earthing)
 - **Triple-phase load break switch above circuit breaker** (no use of removable copperstrips needed to make a visible interruption)
 - **Double position indicator, combination of load break switch and circuit breaker**
- Tested by **KEMA according all required IEC-standards** for switchgear
- Maintenance-free and reliable
- Flexible with many options possible.



SGC, the name of permanent safety in medium voltage. Built to last.

SGC has been supplying reliable products for the distribution of electricity for more than 30 years. Innovative thinking and environmental sensibility is the most important driving force at SGC. In the development of complete solutions there is a minimum use of components all of which have an exceptional life expectancy. The SGC organisation stands for exceptional quality and is customer orientated. The customer specifications and targets are our main concern.

With the use of an exclusive factory with high automation production lines we are developing "state of the art" components and systems. This enables us to develop the DF-2, DR-6/DT-6, DF-3 and DW-2 to the highest quality standards

When it comes to delivery times, prices and products SGC delivers on its promises.



SGC nv

Moorstraat 24
B-9850 Nevele
Belgium

☎ +32 (0)9 321 91 12

☎ +32 (0)9 321 91 13

Internet: www.switchgearcompany.eu

E-mail: info@switchgearcompany.eu

DW606312

THE SPECIALIST IN MEDIUM VOLTAGE SWITCHGEAR, BUILT TO LAST